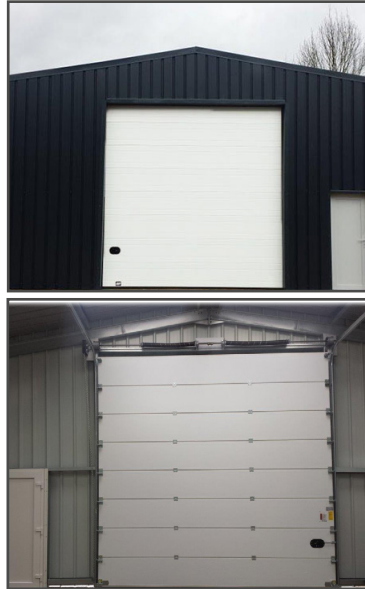


# OUR SECTIONAL DOORS

## SIZE OPTIONS\*

Height	Width
4m	3,5m
4m	4m
4m	4,5m
5m	5m
4m	6m

\* Other sizes may be available upon request



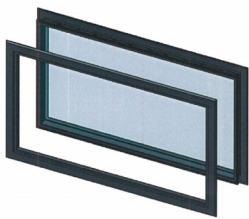
Examples

## INCLUDED AS STANDARD

- + Manual opening,
- + Insulated with polyurethane foam, 40 mm thick with a 10 year guarantee,
- + Kit assembly elements guaranteed for 2 years,
- + Standard raising system: 350 (other raising systems are available),
- + RAL colours : 1015 (Light Ivory) ; 7016 (Anthracite Grey) ; 9006 (Aluminium) ; 9010 (Pure White) ; 9016 (Traffic White),
- + Galvanized U180mm frame,
- + All holes drilled,
- + Galvanized rail,
- + Installation instructions.

## OTHER OPTIONS

**Portholes**  
(circular or rectangular)  
1 per meter (of door width)



OR



**Integrated personnel door**  
Monopoint or multipoint locks



Illustrative Photo



**380V THREE-PHASE MOTOR**  
(option : 230V single-phase motor)

**5 YEAR GUARANTEE**  
After-sales service = fast and effective

**Opening systems :**

- Button actioned (included as standard with electric system),
- Key actioned (optional) with the option of outdoor installation.

## OTHER COLORS OPTIONS

- RAL 6011 (Reseda Green)
- RAL 5010 (Gentian Blue)

