

BUILDINGS : OUR QUALITY ASSETS

+ROBUST +QUALITATIVE +AFFORDABLE

MORE THAN 20 YEARS OF EXPERIENCE PRESENT IN 50 COUNTRIES

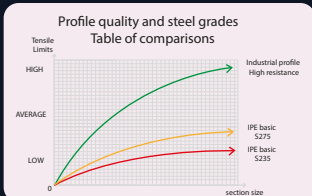
MORE THAN 3 000 TRANSACTIONS PER YEAR



FRAME

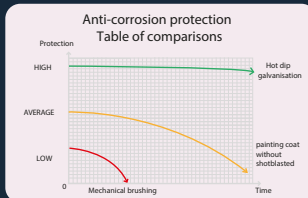
- **Strong industrial profiles high Strength Steel** (cf. graph).
- The **I-profile** in minimum section of 200mm already has a **5% higher resistance** compared to a basic 200mm IPE
- **Great break resistance:** 490 MPa*
- **I-profile**, welds ultrasonically controlled
- The gussets are **oversized** (10% of building width).
- **Tip:** Choose a strong resistant framework and construction rules compliant

*According to Maine's University



PROTECTION

- Steel pickling by soaking in **several baths to eliminate** impurities
- **Hot-dip galvanization** by immersion in molten zinc bath at over 400°C. This process facilitates metals interpenetration to form a **high-strength** alloy
 - Scratches do not create incipient rust.
- **Tip:** Choose hot-dip galvanization to avoid unnecessary costs, such as retouching finishing painting, maintenance etc.



FOUNDATIONS

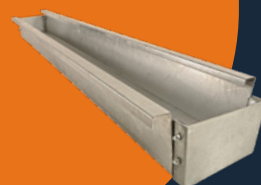
- **Easy foundations**, an **easy-to-assemble kit** (depending on the type of ground and the load-bearing).
- **Strong industrial profiles**, embedded at 40 cm in the massifs (which confers better stability and lower costs).
- **Tip:** Choose simple and easy to implement foundations.



ROOFING

- **1st choice sheet metal:** Rust perforation warranty, 25 microns lacquers (20 microns polyester + 5 microns primary), 63/100 profile*.
- **Exclusive:** 5 reinforced waves
- **Anti-condensation layer*:** Anti-peeling manufacturer warranty, absorbs and drains humidity into the gutters, suitable for opened & closed buildings (up to 500g of water per m²)
- Healthy atmosphere, suitable for animal sheds + closed buildings
- **Tip:** Choose a condensation controller rather than a simple felt.

*According to the finish recorded on your quotation



INTERLOCKING GUTTERS*

- **2.5mm** of thickness.
- Unique & **exclusive interlocking system** (no more flanges, burnt galvanization, and welds that rust).
- **Advantages of interlocking:** more stiffness, ease of installation, perfect sealing, no welding = no risk of corrosion, eases cladding installation.
- **3in1:** eave purlin, galvanized gutter, fixation point for the cladding.
- **Tip:** choose an easy-to-install gutter: durable & rigid!

*Available for certain ranges, subject to technical constraints



FLASHING

- Included as standard: **extra large ridge** fixed to the purlins (construction rules compliant).
- **Tip:** Check if the ridge is fixed on the purlins not on the metal sheets, otherwise your insurance may not cover damage in case of accident.



CLADDING

- **1st choice sheet metal:** Rust perforation warranty, 25 microns lacquers (20 microns polyester + 5 microns primary), 63/100 profile*
- **Trapezoidal profile:** aesthetic and modern (6 waves)
- **Vertical and Horizontal mounting** possible*
- **Easy installation and invisible fittings!**

*According to the finish recorded on your quotation



PURLIN PLATES

- **C180mm hot-dip galvanized** purlins.
- High resistance, strong inertia.
- **Tip:** check the resistance of your structure!



TECHNICAL STUDY

- All our metal steel sheds in kit form are calculated **according to the French standards**
- Moreover, our metal structures are CE marked according to the EN1090 standard.